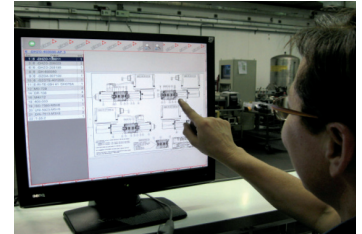


• Assembling benches computerization

Quality has always been the Atos key point and thus several new activities are regularly focused to the improvement of our quality standards in terms of customer satisfaction and faults prevention. For such a purpose **PC station and monitor** are being installed on the assembling benches for a direct connection to the Atos' intranet network.

The operator can **display in real time** all the updated information needed for valves assembling operations such as drawing, bill of material, operational visual instructions.

The assembling lines computerization will improve our quality performances through a further reduction of possible assembling non conformities.



Visual instructions

• New demo room

Within the new enlarged Atos facilities in Sesto Calende, the new Demo room has been built up in order to complete the technical meeting with practical training mainly focused on the new advanced digital technology.

New electrohydraulic training benches have been designed and manufactured to practise on:

- ▶ open loop electronics E-MI-AS-IR and E-BM-AS-PS (tech. tables [G020](#), [G025](#))
- ▶ closed loop electronics E-RI-TERS and E-RI-TES (tech. tables [G205](#), [G210](#))
- ▶ integral driver with alternated P/Q control E-RI-TES/SF (tech. table [G212](#))
- ▶ new digital position controller type Z-RI-TEZ (tech. table [G330](#))



New demo room

• New Atos standard solution for CNC press-brakes, tech. table [TM020](#)

The technical evolution and high competitiveness of CNC press brakes market leads Atos to re-design the full range of standard solutions with more compact and modular concepts thus offering high flexibility and remarkable advantages. The new Atos standard solutions for press brakes includes:

- ▶ new open loop solutions, CE or NON-CE marked, directly driven by the press CNC: optimal compromise between cost and performances
- ▶ closed loop solution with servoproportionals with integral or remote driver
- ▶ crowning option available on the whole range
- ▶ PFB normally open prefilling blocks, available in sizes NG25, 32, 40, 50, 63
- ▶ TÜV certification according to the EN 12622

PBA (NON-CE) and PBAC (CE certified), for presses up to 3000 KN consist of NG6 single synchro block, also including the pressure controls

PBB (NON-CE) and PBBC (CE certified), for presses up to 15000 KN consist of 2xNG10 synchro blocks, to be assembled on the press frame or stacked on the prefilling blocks, plus 1x NG16 pressure block.



Open loop CE synchro block

Availability: already in production

Documentation: besides the tech. table, you are requested to fill and send the enclosed questionnaire to the ITEC Dept. to sort out the best solution, [click here](#)

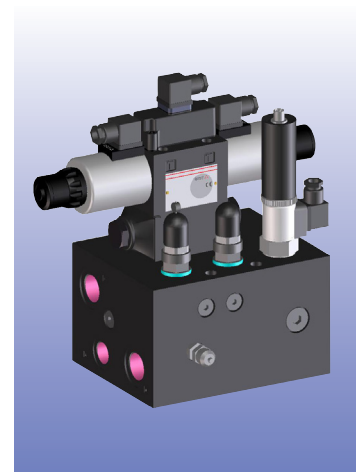
Prices: available in the 09110 TAK price list

• New Atos standard solution for torque bar press-brakes, tech. table [TM030](#)

The new range of Atos standard solutions for torque bar presses are now available in 2 executions and they operate presses from 40 ton up to 500 ton bending force.

- ▶ PBT: not provided of the CE Certification
- ▶ PBTC: provided with the CE certification by TUV, according to EN 12622 rules.

The new solutions are featured by new modular design and by enhanced flow capability and they consist of 1x main control block with size10 on/off directional valve, 1x pressure control block with size16 pressure relief valve. They can work together with 2 x PFB normally open prefilling blocks, the same of the CNC press brakes (option /NO) or with "normally closed" prefilling blocks usually integrated into cylinders heads (option /NC). A pressure reducing valve to limit the piloting pressure of the prefilling valves could be fit into the pressure control block (option /G).



PBTC: main control block

Availability: already in production

Documentation: besides the tech. table, you are requested to fill and send the enclosed questionnaire to the ITEC Dept. to sort out the best solution, [click here](#)

Prices: available in the 09110 TAK price list

• **New sizes of servoactuators for Parison control**, tech. tables [TF610](#), [TF620](#)

The range of actuator and digital servoactuator for Parison control in blow moulding machines have been widened with the following new sizes of special CKT servocylinders:

- ▶ Ø 160/70 mm with total stroke of 12 mm.
- ▶ Ø 200/90 mm with total stroke of 12 mm

They are equipped with an LVDT position transducer and low friction seals.

They are operated by special NG10 servoproportional type DLKZOR with integral-to-valve driver for **CKG** actuators and with integral-to-valve digital position controller for CKZ servoactuators.

Availability: already in production

Prices: available in price list 09100



New Parison servoactuators

• **New ATEX certification with flammable dust**, tech. tables [E120](#), [E135](#), [E137](#)

New protection mode against dust ignition is now available for all standard and stainless steel ex-proof solenoids, in on-off and in proportional executions, according to ATEX directive 94/9/CE: **Ex II 2GD Ex d IIC T6/T4/T3 Ex tD A21 IP67 for zone 1, 2, 21 and 22.**

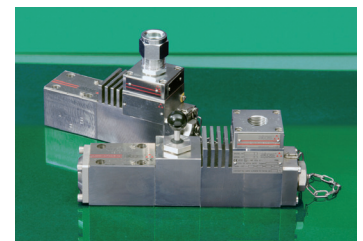
They operate directional, pressure and flow control valves.

This is the extension of the previous certification for applications in surface plants with presence of flammable gases and vapours, with potential addition of flammable dust (classification D) according to protection mode **Ex tD**.

Typical applications: production of plastics pigments or pharmaceuticals, grain mills, food industry and plant for coke treatment

Availability: already in production

Prices: available in price list 09100



ATEX stainless steel ex-proof

• **Ex-proof extension to C UL US certification**, tech. tables [E125](#), [E135](#), [E137](#)

To conform the Atos ex-proof valves to the North America certifications, the previous UL certification has been extended to the Canadian CSA specifications.

The on-off and proportional ex-proof solenoids in standard and stainless steel executions are now certified **C UL US** according to **UL 1022** and **CSA 22.2 nr. 139-1982** Standard, Class I, Groups C&D (Groups IIA & IIB to NEC 505-7).

They are suitable for directional, pressure and flow control valves

Availability: already in production

Prices: available in price list 09100



C UL US ex-proof valves

• **New series of LIQZO proportional cartridges**, tech. tables [F320](#), [F330](#), [F340](#)

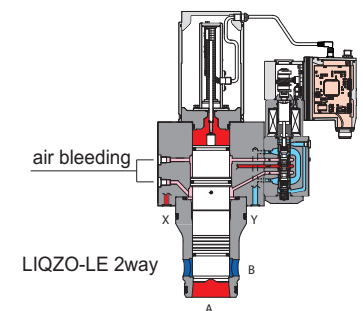
New design improvements have been introduced in the updated series of LIQZO 2 and 3 way closed loop proportionals to further enhance reliability and to make easier the valve commissioning in the field operation. Particularly the main cover is now in carbon steel to better withstand possible pressure spikes generated by harsh deceleration of big inertial masses; air bleeding ports have been located into the valve main cover to better bleed off the air presence into the pilot chambers.

The 2 and 3 way LIQZO valves will modify the series number as following:

- ▶ size NG50, 2 and 3 ways, from series 70 to **80**
- ▶ all the other sizes, 2 and 3 ways: from series 62 to **70**

Availability: 12 weeks for prototype. Series supply: from April 2010

Prices: available in price list 09100



LIQZO-LE 2way

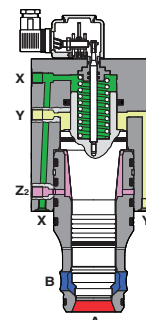
• **On-off safety cartridges 052103 LIDAS /F**, tech. table [TH055](#)

The **052103 LIDAS/F** is a 2 way active safety cartridge with special area ratio to operate the **motion-non motion** function of injection moulding machine assisted by robot. The mould can be opened contemporarily with the machine door for a free access of the robot arm inside the press clamp. The active safety cartridge intercepts the flow by preventing mould closing as long as the machine door is not completely closed (dangerous condition).

They are available in sizes 16, 25, 32, 40 and 50 (ISO 7368) with integral proximity inductive sensor or with mechanical microswitch

Availability: already in production

Prices: available in price list 09100



052103 LIDAS/FI

Miscellaneous information

• **Anti-rotation devices for DPZO *-2 and -3**, tech. tables [F170](#), [F172](#), [F175](#)

The new series of DPZO*-2 and -3 is provided with a specific device to prevent the rotation of the main spool in case of high flow, as also used in the standard valves by Rexroth. This system allows to operate at the max permissible flow without any spool rotation and consequent damage of spool and body

The **DPZO*-2 and -3** valves with the new anti-rotation devices will modify the series number as following:

A, AE, from 31 to 32

AES, from 20 to 21

T, TE, TES, L, LE, LES from 40 to 41

Availability: DPZO*-2 already in production, DPZO*-3 starting from Feb. 010

Prices: unchanged

• **LIMZO size 80**, tech. table **F300-10**

The new LIMZO size 80 is now also available for -TERS and -AERS pressure closed loop versions, previously available only for open loop execution.

Availability: already in production

Prices: available in price list 09100

• **New size 80 and 100 for LIDEW and LIDBH cartridge valves**, tech. table [H030-10](#)

We remind you that the range of LIDEW and LIDBH cartridge valves, just available up to size 63, has been extended up to size 100 (max flow up to 8000 l/min) and they are suitable for high flow applications such as steel and forging plants. For size 80 and 100, the pilot solenoid valve is size 10 DKE.

Availability: already in production

Prices: available in price list 09100

• **Optional manual override /WP for intrinsically safe valves**, tech. table [E130-17](#)

The new prolonged manual override (option /WP) for intrinsically safe valves makes easier the emergency operation of the spool in absence of electrical power supply without tools. This option is particularly demanded by the Marine sector where the manual operation of the valve in case of electric fault is mandatory.

The standard OW execution keeps being equipped with the previous push-pin override, designed for standard applications, whose protrusion is reduced to avoid any valve switching further to an unintended operation.

Availability: already in production

Prices: additional list price = +11€ for each solenoid